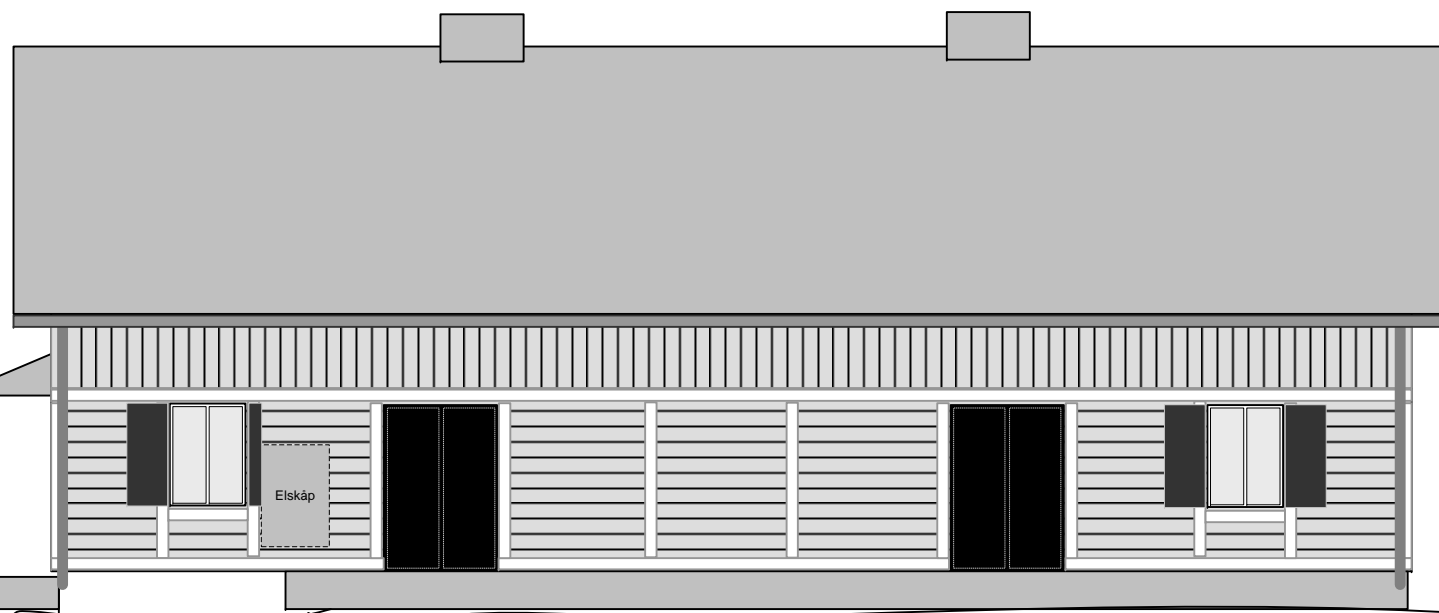
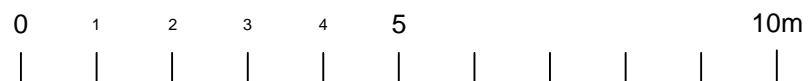


Fasad mot väster



Fasad mot öster

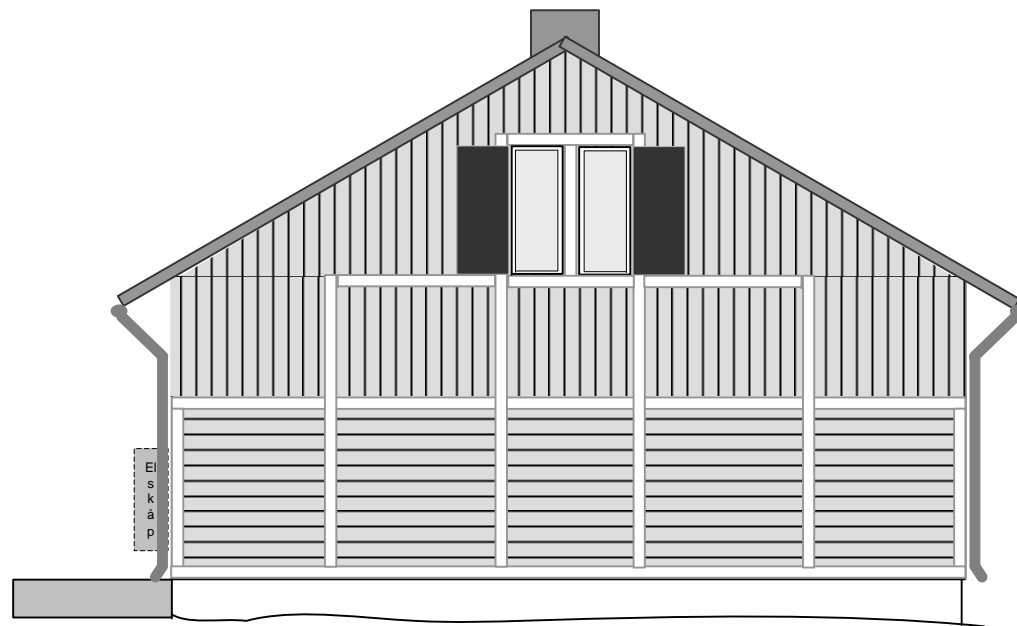


Tingstäde
Furbjärs 1:26
Utvändigt

RIT 12:09-01

Skala 1:100

2012-09-10 RITAD AV: Rickard Damm



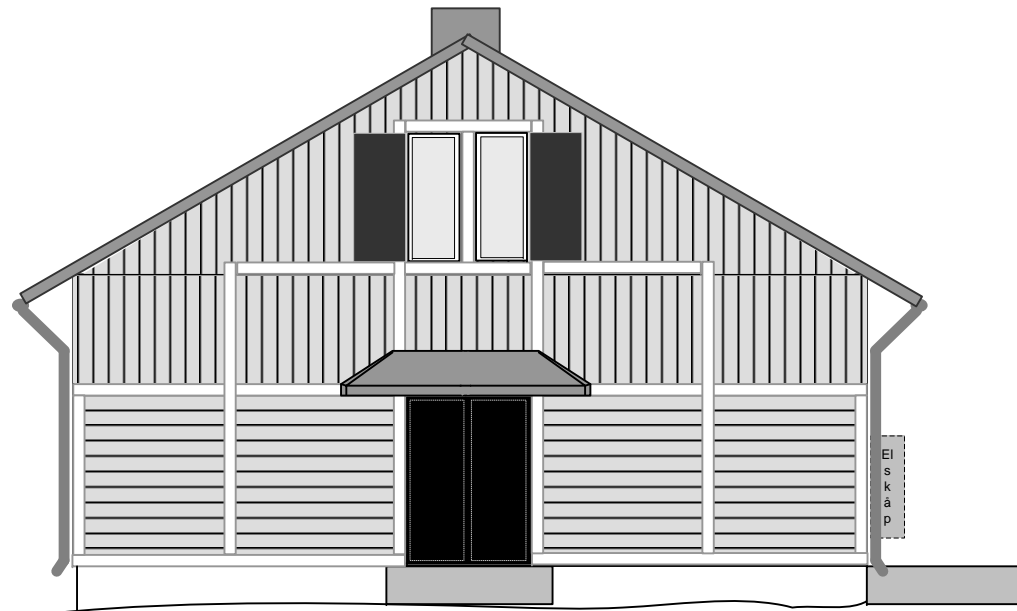
Fasad mot norr

Faluröd stående samt liggande träpanel. Vita snickerier vid fönster, dörrar etc. Svarta dörrar samt fönsterluckor. Vita fönsterbågar.

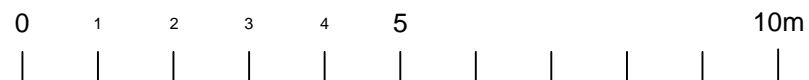
Svart plåttak samt svarta hängrännor och stuprör.

Grundmur i natursten med f.d. lastbrygga samt dörravsats i betong.

Rödmålat utanpåliggande elskåp.



Fasad mot söder



Tingstäde
Furbjärs 1:26

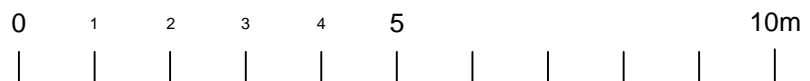
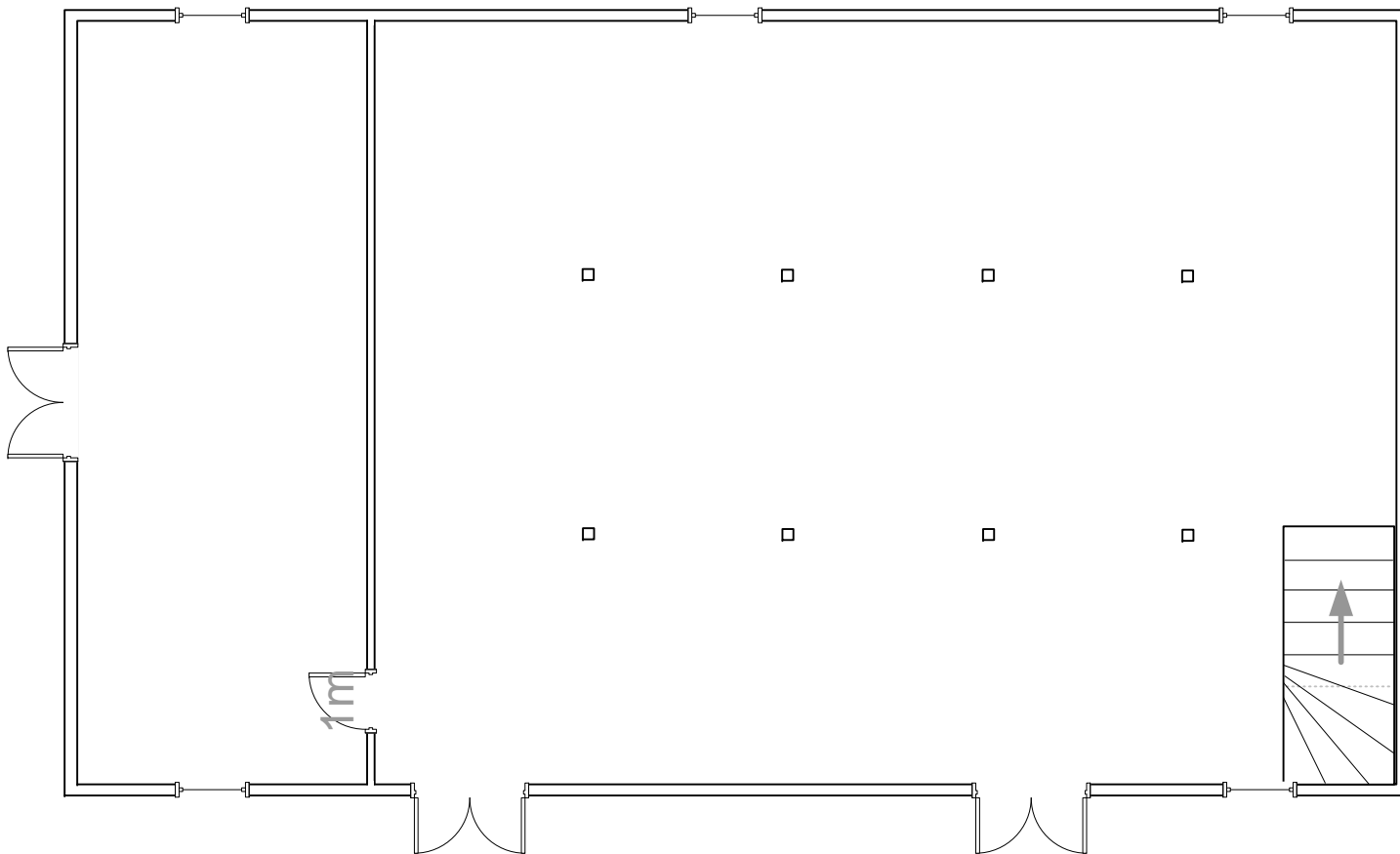
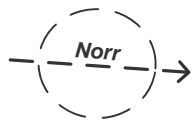
Utvändigt

RIT 12:09-02

Skala 1:100

2012-09-10

RITAD AV: Rickard Damm



Tingstäde
Furbjärs 1:26

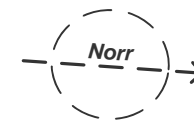
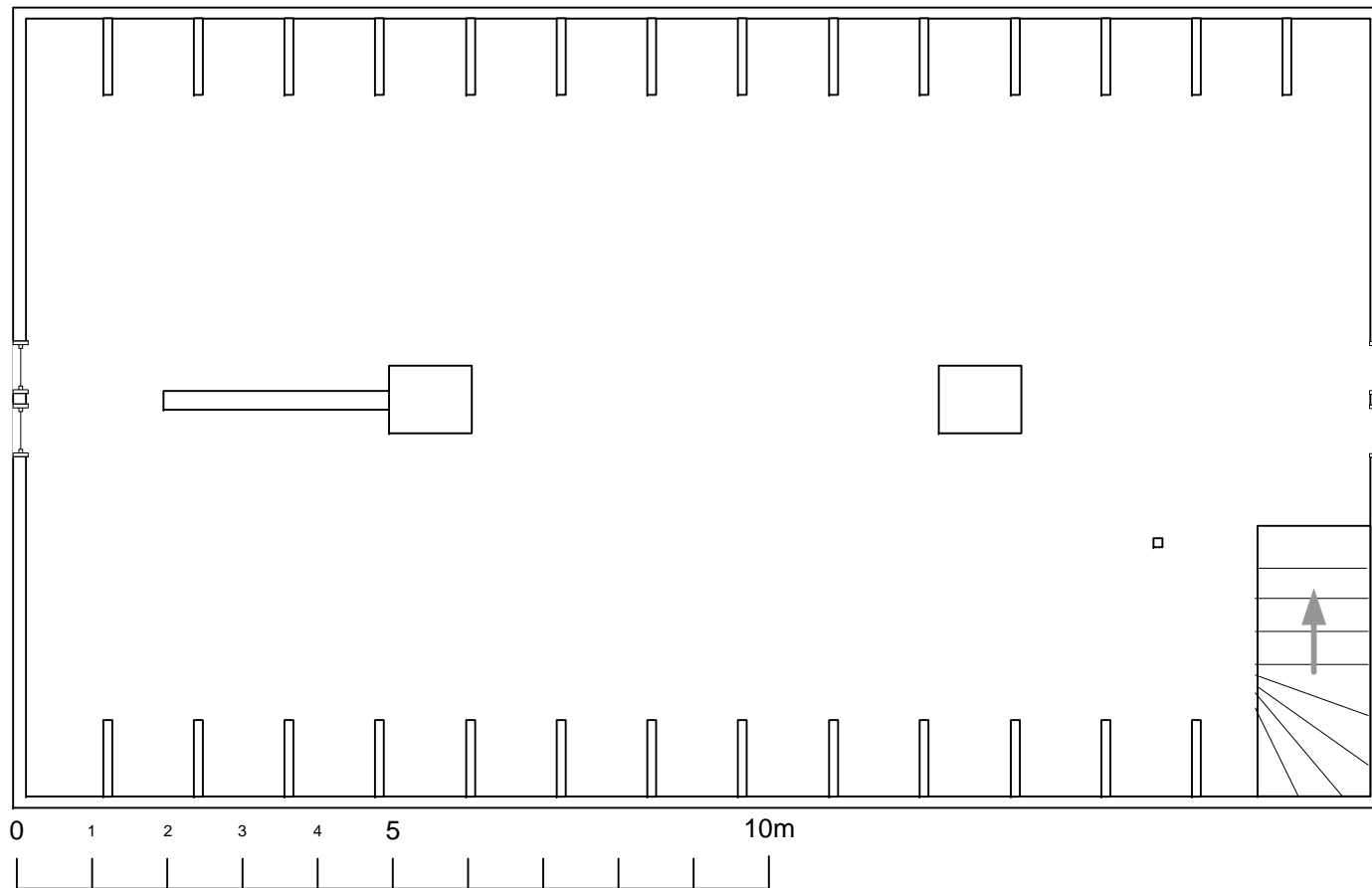
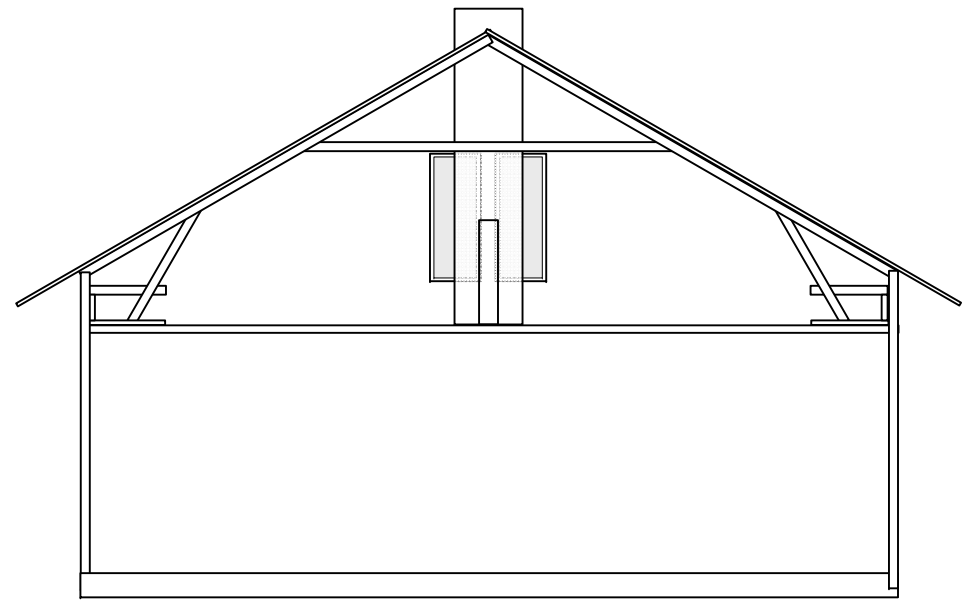
Planlösning BV

RIT 12:09-03

Skala 1:100

2012-09-10

RITAD AV: Rickard Damm



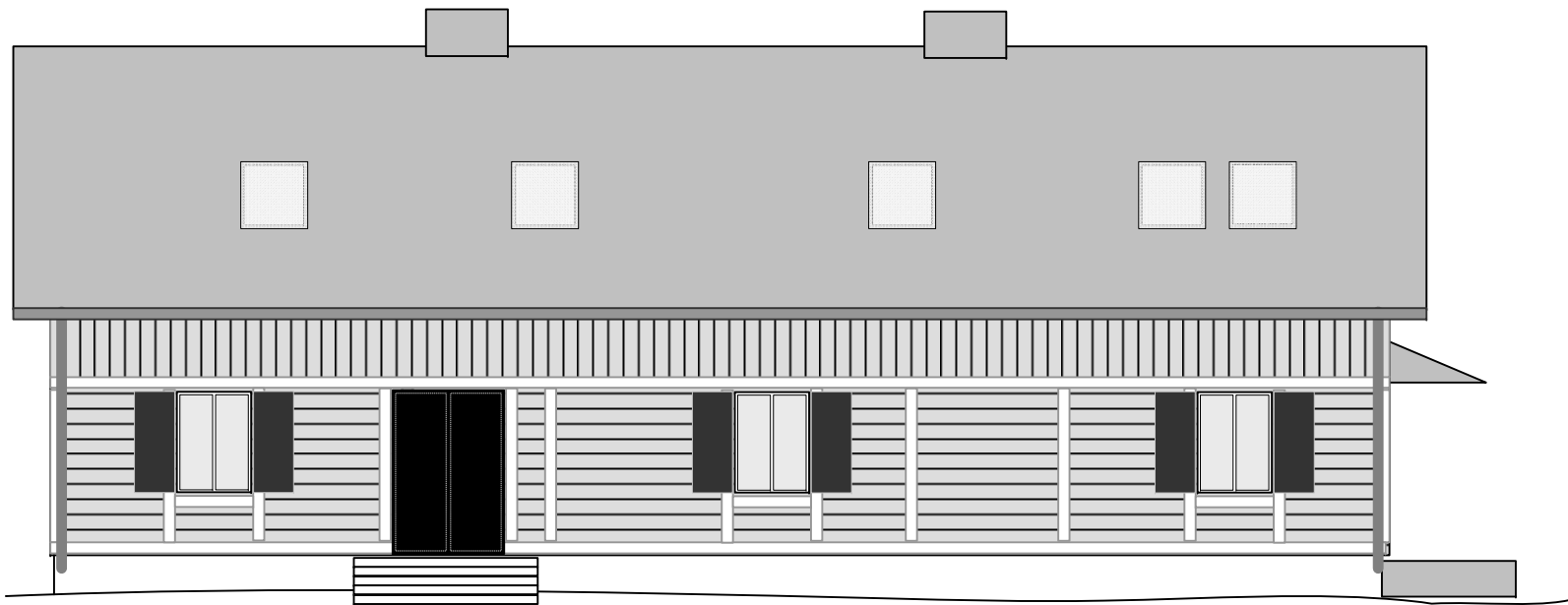
Tingstade
Furbjärs 1:26
Planlösning Vind

RIT 12:09-04

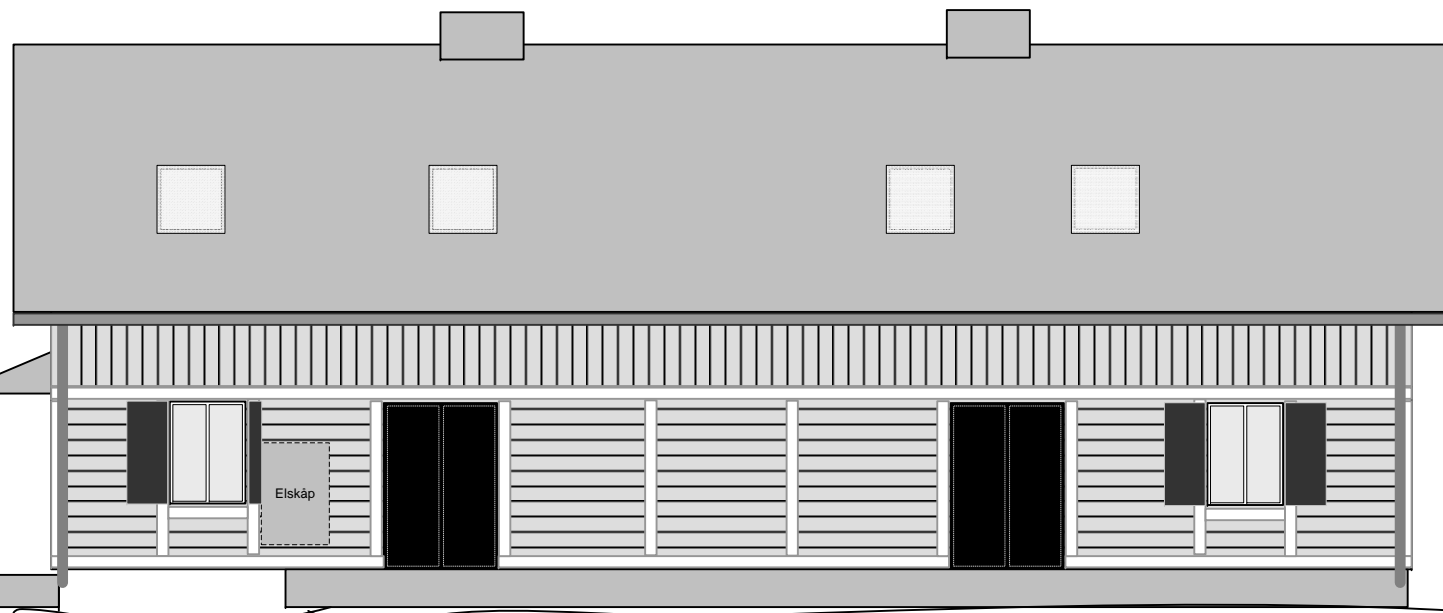
Skala 1:100

2012-09-10

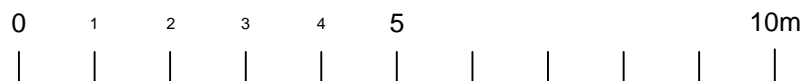
RITAD AV: Rickard Damm



Fasad mot väster



Fasad mot öster



Tingstade
Furbjärs 1:26

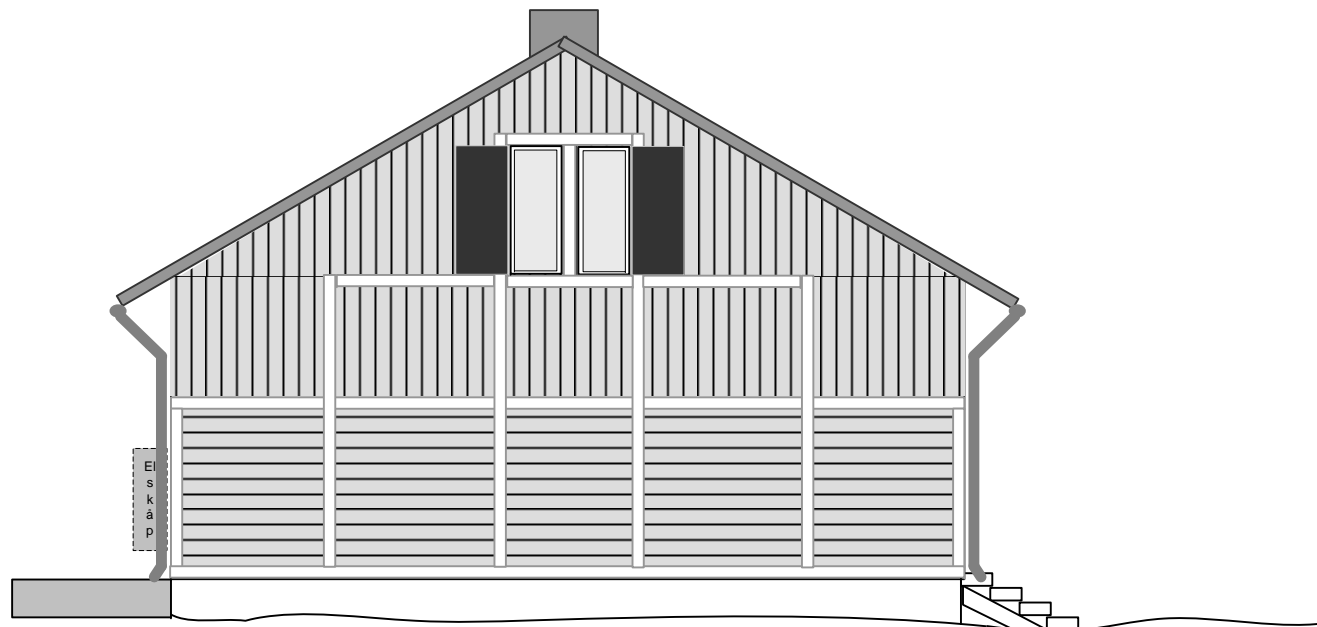
Utvändigt

RIT 12:09-05

Skala 1:100

2012-11-03

RITAD AV: Rickard Damm



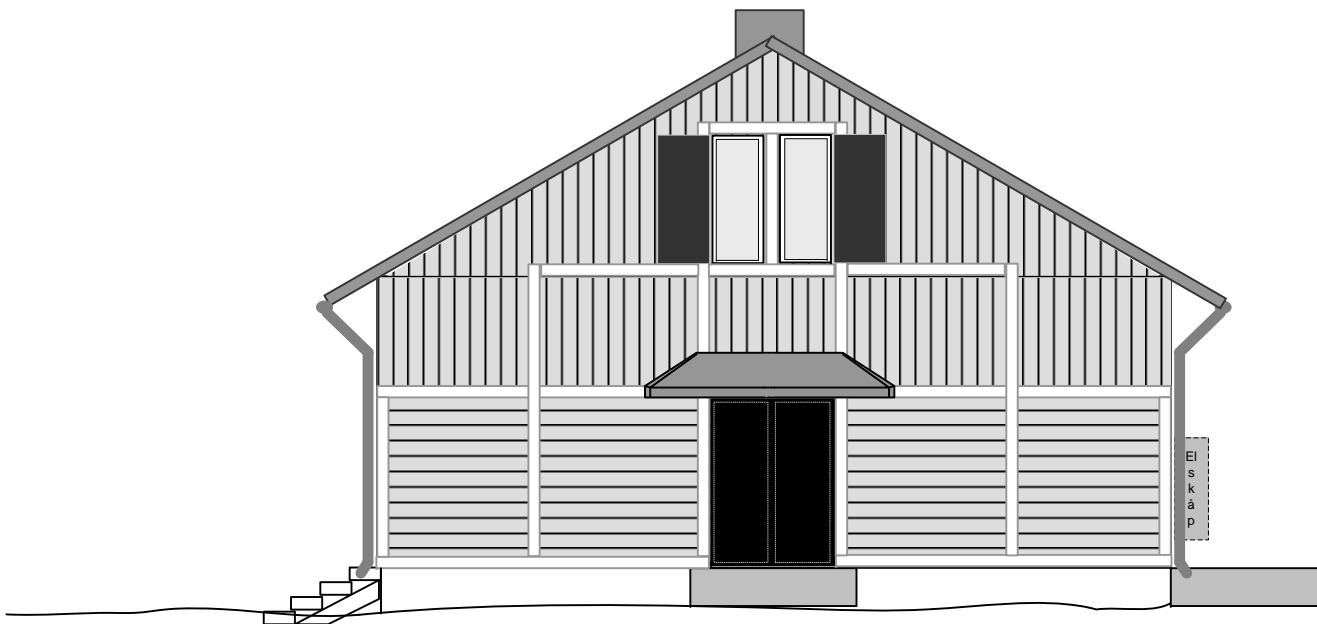
Fasad mot norr

Faluröd stående samt liggande träpanel. Vita snickerier vid fönster, dörrar etc. Svarta dörrar samt fönsterluckor. Vita fönsterbågar.

Svart plåttak samt svarta hängrännor och stuprör.

Grundmur i natursten med f.d. lastbrygga samt dörravsats i betong.

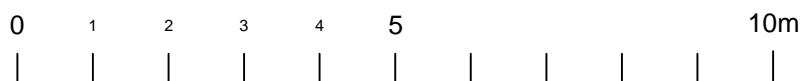
Rödmålat utanpåliggande elskåp.



Fasad mot söder

Tingstäde
Furbjärs 1:26

Utvändigt

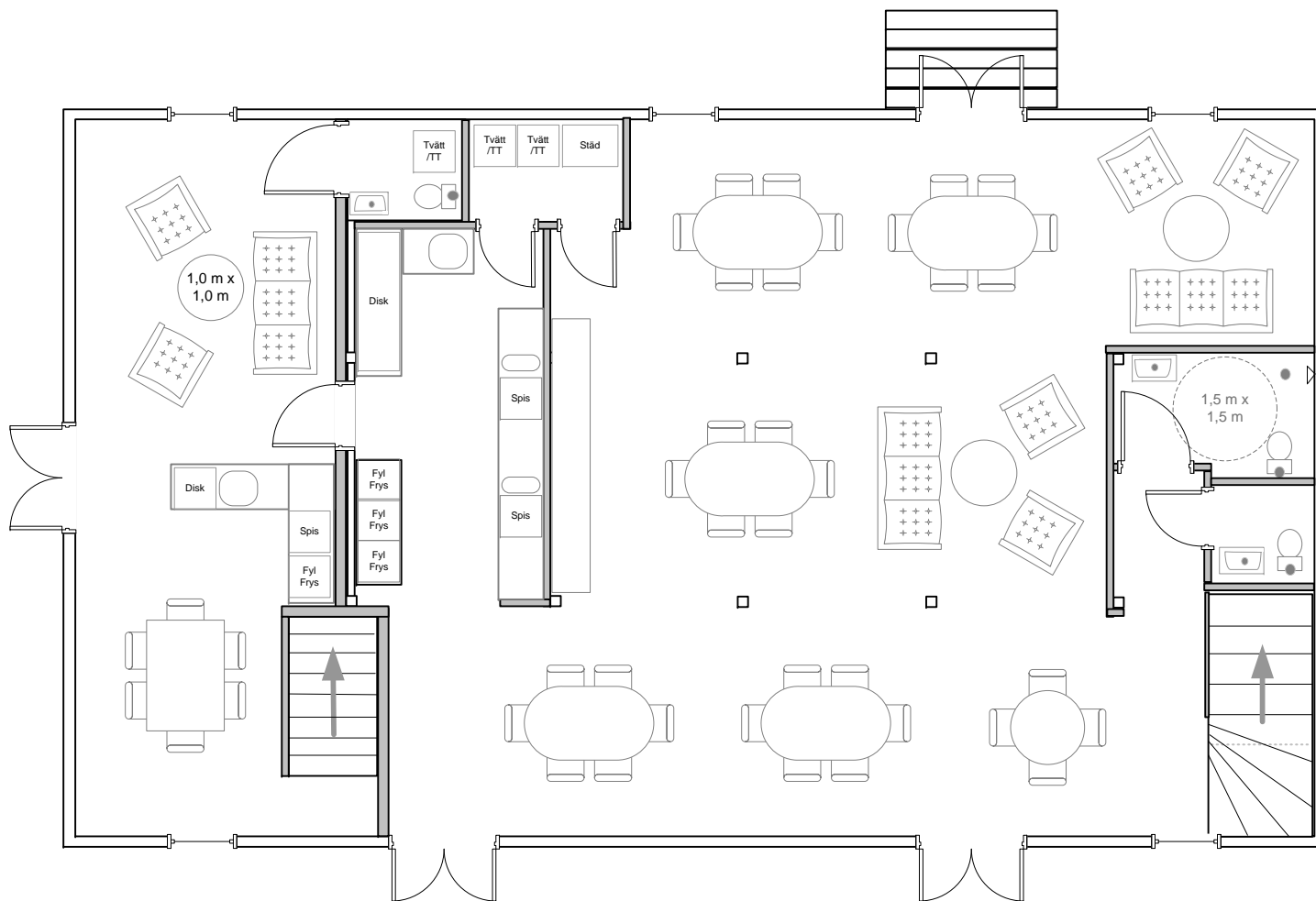
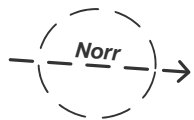


RIT 12:09-06

Skala 1:100

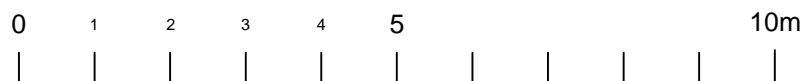
2012-11-03

RITAD AV: Rickard Damm



Tingstäde
Furbjärs 1:26

Planlösning BV

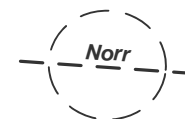
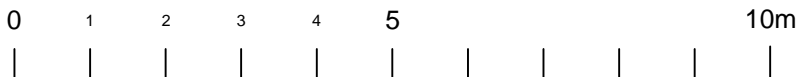
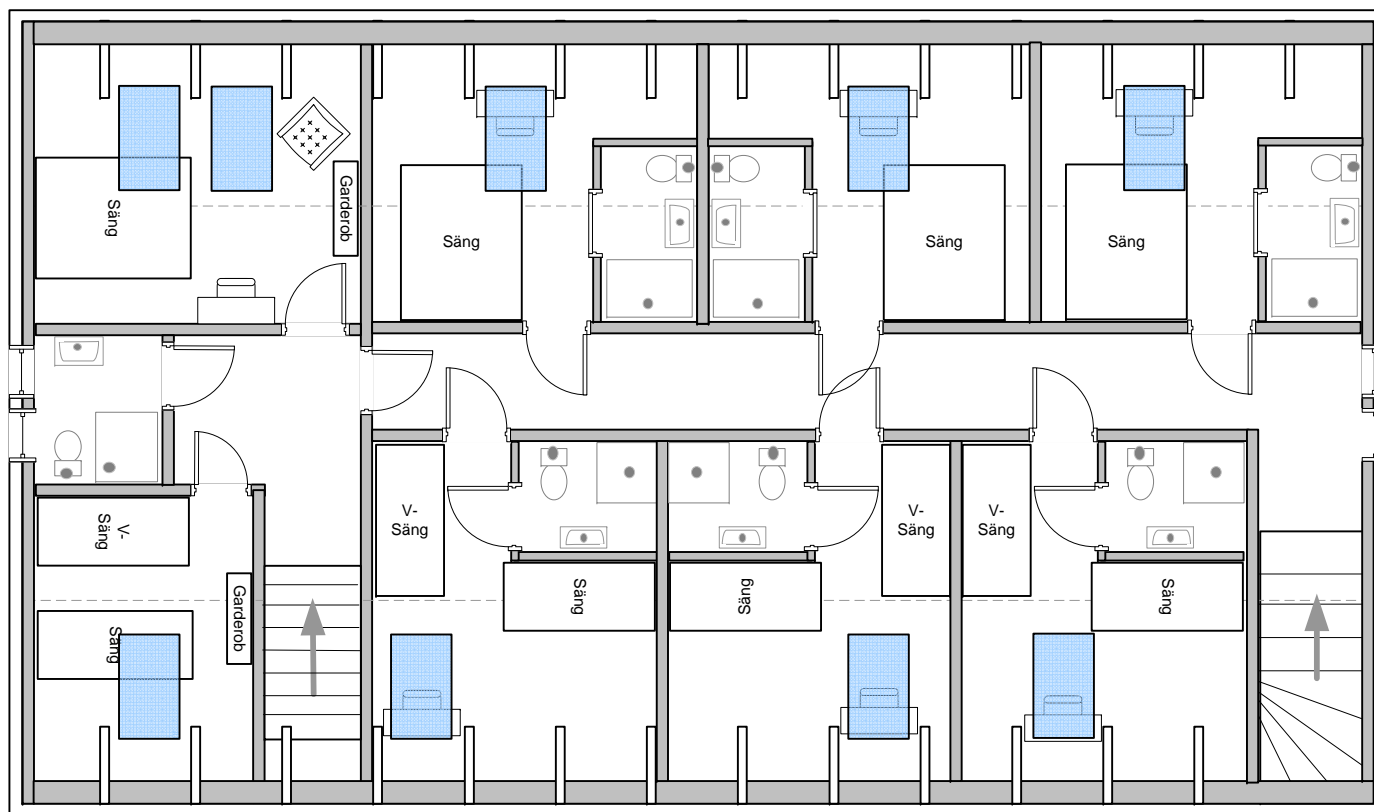
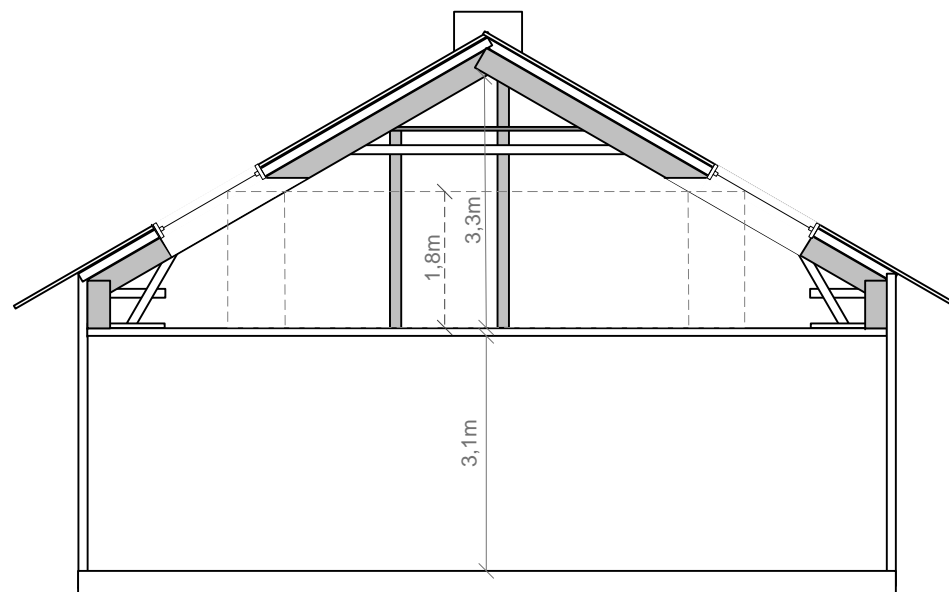


RIT 12:09-07/2

Skala 1:100

2013-03-13

RITAD AV: Rickard Damm



Tingstäde
Furbjärs 1:26

Planlösning Vind

RIT 12:09-08/2

Skala 1:100

2013-03-15

RITAD AV: Rickard Damm